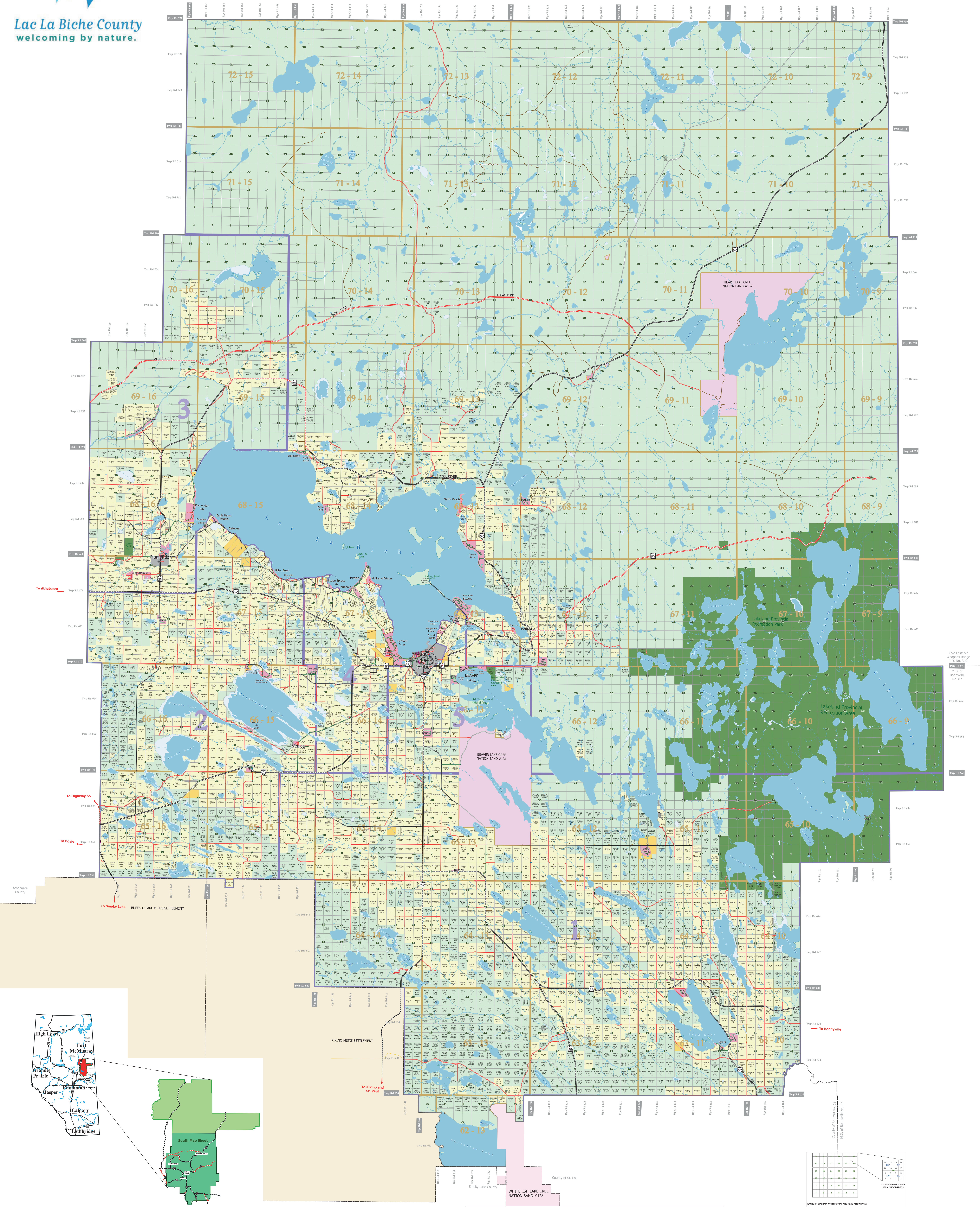




Lac La Biche County
welcoming by nature.

Lac La Biche County 2022 Ownership Map



Lac La Biche County makes no representations or warranties regarding the information contained in this document, including, without limitation, whether said information is accurate or complete. Persons using this document do so solely at their own risk, and Lac La Biche County shall have no liability to such persons for any loss or damage whatsoever.

This document shall not be copied or distributed to any person without the express written consent of Lac La Biche County.

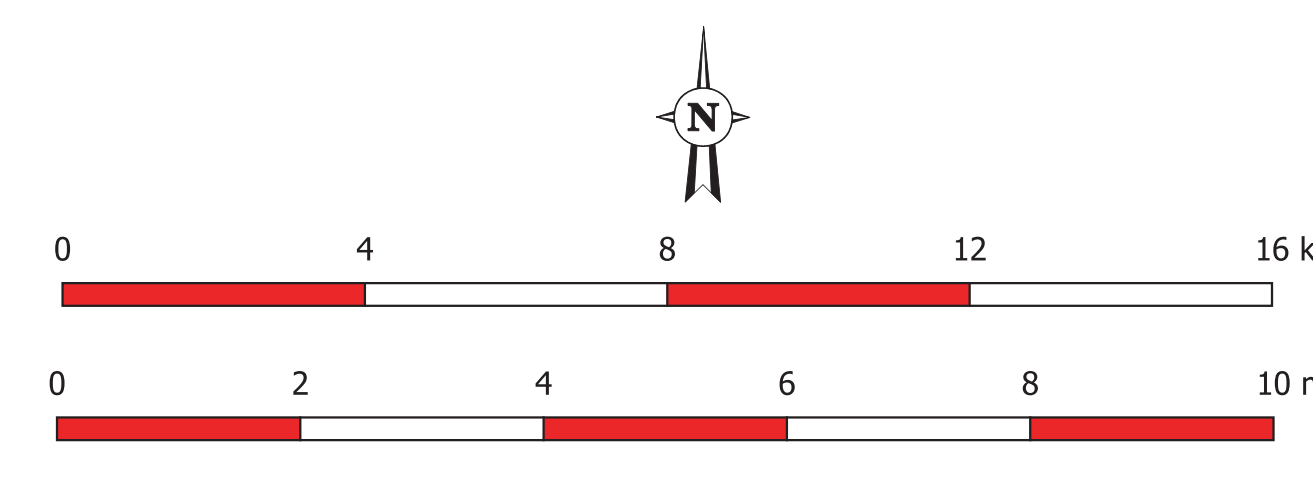
© 2022 Lac La Biche County. All Rights Reserved.

Compiled from the Rural Cadastral Digital Base, August 15, 2022, 1:20,000 Digital Base.

Land Ownership compiled from municipal tax data, August 15, 2022.

Building/Site/Feature information compiled from municipal assessment data, December 2021.

NOT RESPONSIBLE FOR ERRORS OR OMISSIONS



Scale 1 : 100,000

Legend

Transportation

- Gravel Highway
- Paved Highway
- Private Roads
- Oil Road
- Other Roads

Map Points

- Campground
- Cemetery
- Church
- Community Hall
- Fire Hall

Land Classification

- Hotel/Motel
- Landfill
- Municipal Office
- Tower
- Water Treatment Plant
- Community Hall
- Fire Hall

Land Classification

- Crown Land
- Titled Property
- Hamlet Boundary
- Subdivisions
- Indian Reserve
- Metis Settlement
- Provincial Park
- Council Ward Boundary

Lac La Biche County
Ownership Map
South Map Sheet

Projection: UTM Zone 12 NAD 83

Box 1679, Range Road 135 S.H.663
Lac La Biche, Alberta
T0A 2C0
Phone: (780) 623-1747
Fax: (780) 623-2039

Date: August 24, 2022