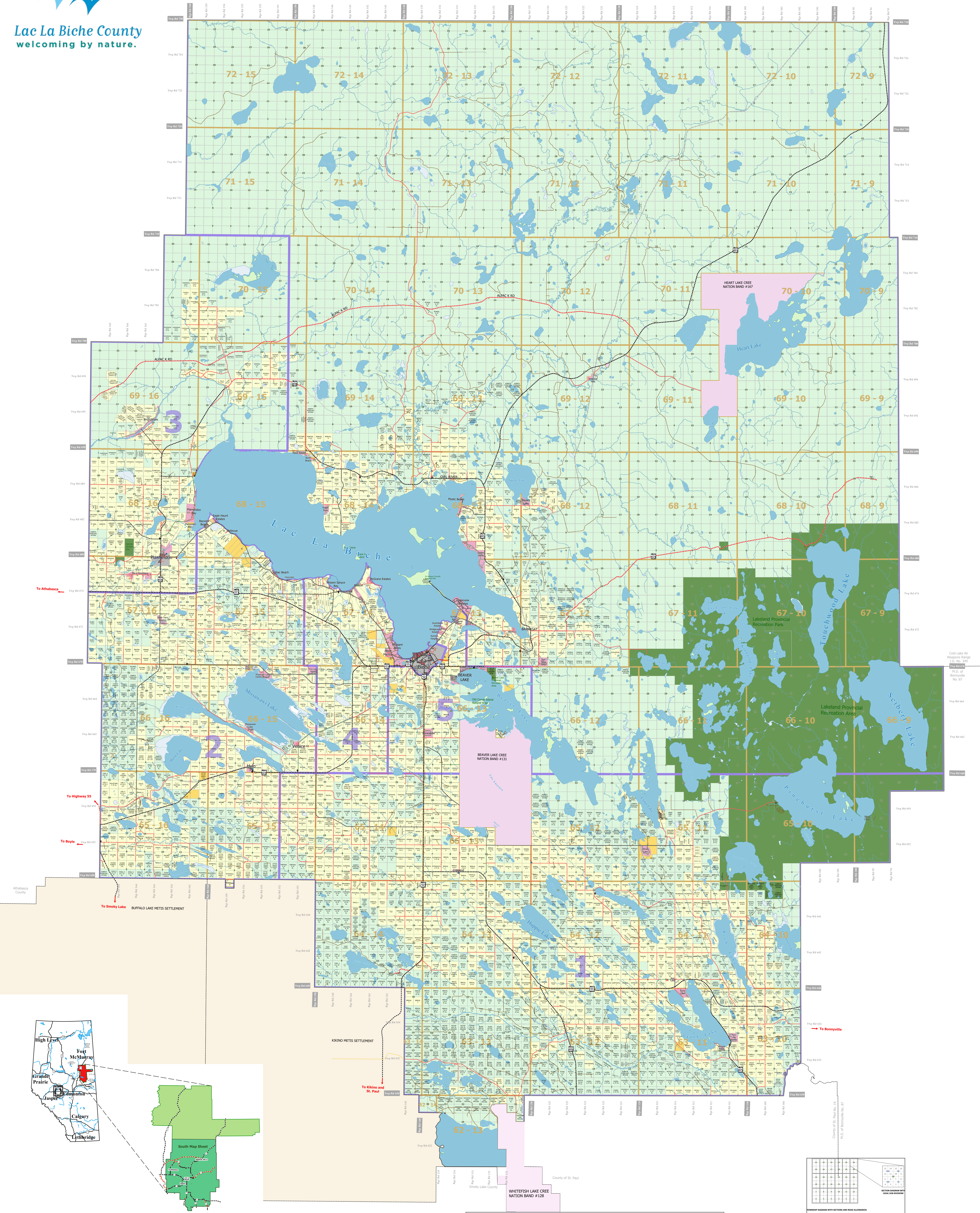




Lac La Biche County
welcoming by nature.

Lac La Biche County 2023 Ownership Map



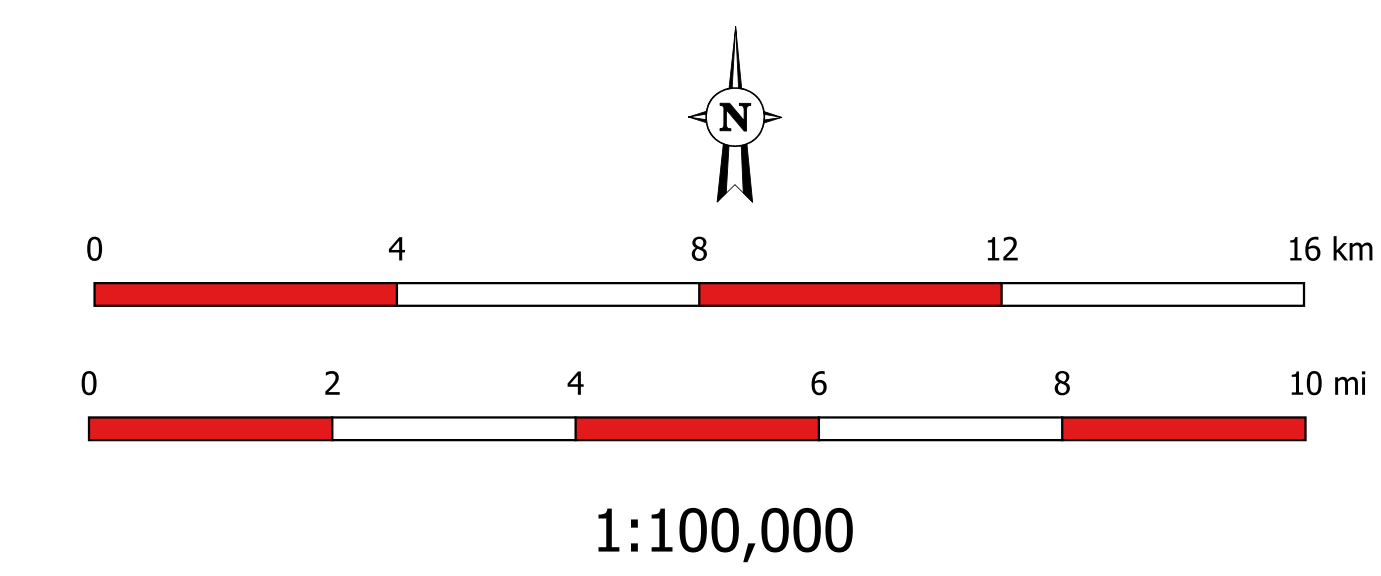
Lac La Biche County makes no representations or warranties regarding the information contained in this document, including, without limitation, whether said information is accurate or complete. Persons using this document do so solely at their own risk, and Lac La Biche County shall have no liability to such persons for any loss or damage whatsoever.

This document shall not be copied or distributed to any person without the express written consent of Lac La Biche County.

© 2023 Lac La Biche County. All Rights Reserved.

Compiled from the Rural Cadastral Digital Base, June 26, 2023, 1:20,000 Digital Base.
Land Ownership compiled from municipal tax data, June 26, 2023.
Building/Site/Feature information compiled from municipal assessment data, December 2022.

NOT RESPONSIBLE FOR ERRORS OR OMISSIONS



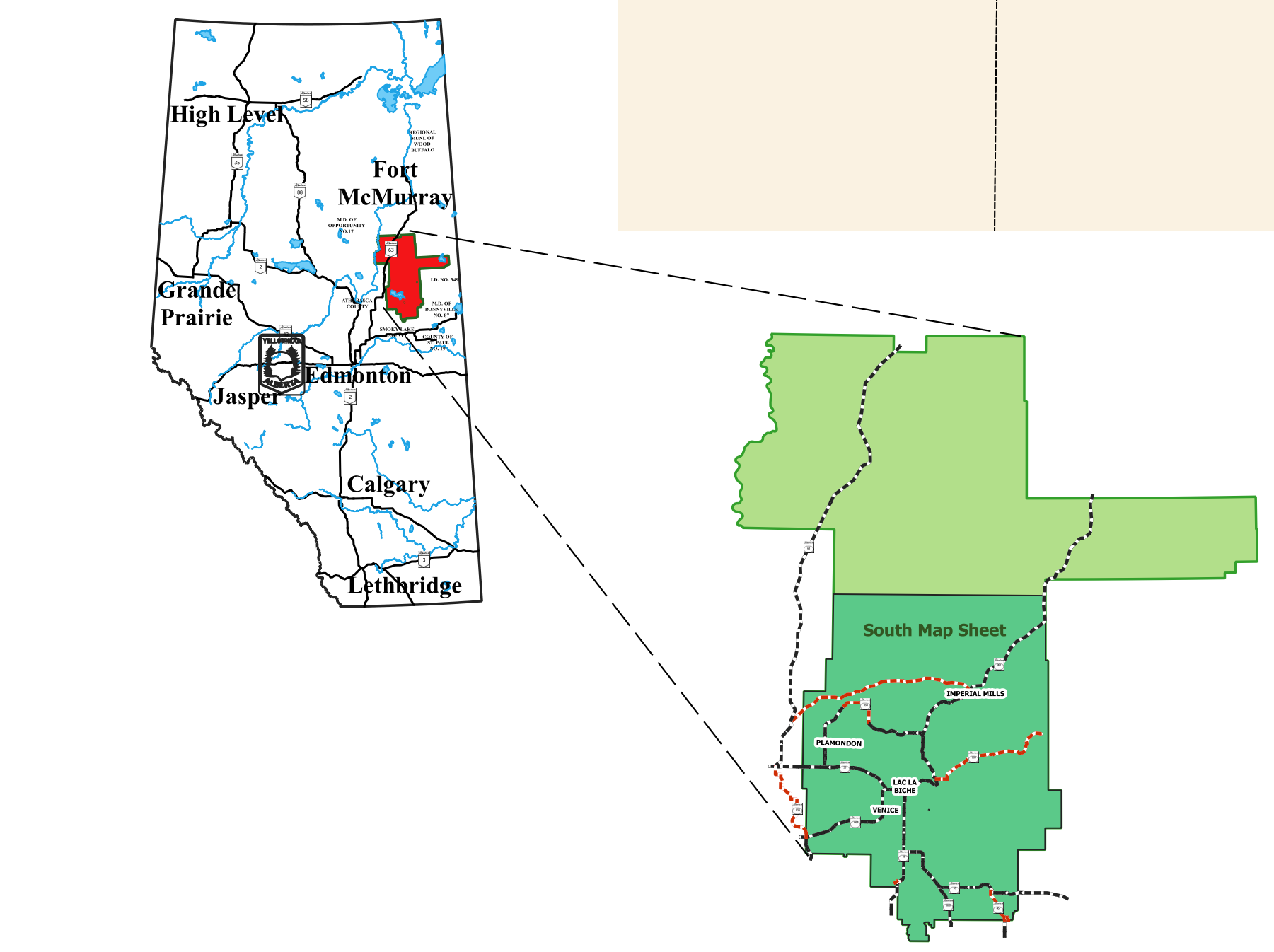
| Legend | |
|-----------------------|-------------------------|
| Transportation | Map Points |
| Gravel Highway | ▲ Campground |
| Paved Highway | ⚰ Cemetery |
| Private Roads | ⚙ Water Treatment Plant |
| Oil Road | Ⓜ Community Hall |
| Other Roads | 🔥 Fire Hall |
| Railway | 🏨 Hotel/Motel |
| | 🗑 Landfill |
| | 🏛 Municipal Office |
| | 🏰 Tower |
| | 🏠 Subdivisions |
| | 🇮🇳 Indian Reserve |
| | 🏡 Metis Settlement |
| | 🏞 Provincial Park |
| | 🏠 Municipal Property |
| | 🌳 Crown Land |
| | 🏠 Titled Property |
| | 🏠 Council Ward Boundary |
| | 🏠 Hamlet Boundary |

**Lac La Biche County
Ownership Map
South Map Sheet**

Projection: UTM Zone 12 NAD 83 Date: August 08, 2023

Box 1679, Range Road 135 S.H.663
Lac La Biche, Alberta
T0A 2C0

Phone: (780) 623-1747
Fax: (780) 623-2039



Credit: Lake for
Weapons Range
T.O. No. 349
R.S.O. of
Bonnyville
No. 87