

NOTICE OF CONSTRUCTION

105 Street Water and Sewer Installation – Lac La Biche, AB

Dear Property Owners/Residents:

Canadian Consulting Engineers and Kelsey Pipelines Ltd. has been contracted by Lac La Biche County for 105 Street Water and Sewer construction this year. This project will consist of new watermains installations, sanitary sewer service connections, road work and ditches. Please review the attached map as a reference.

Timeline: April 15, 2024 to September 2024 (*weather-permitting*)
Scope of Work: Watermains, sanitary sewer service connections, road work and ditches
Hours of Work: 7 a.m. – 7 p.m. (Monday to Saturday)
9 a.m. – 5 p.m. (Sunday and Holidays)

Impact to Residents and Local Traffic:

- Range Road 140A is expected to be closed as needed, likely for the duration of construction, south of the first north entrance into the Independent Grocers, for a segment which spans approximately 148 meters north of the rail crossing to approximately 53 meters south of the rail crossing. The intersection of 100 Ave and Range Road 140A is also going to be closed as needed, likely for the duration of construction, for a segment of approximately 45 meters northeast of the intersection.
- There may be interruptions to solid waste and recycling, water, sanitary, access and other services to all the residents throughout construction.
- Alternate traffic accommodations will be assessed on an as-need basis.
- Any additional construction updates will be posted on the County website.

Please use caution around heavy equipment and be aware of workers in your area. We appreciate your patience and cooperation as we complete this important work.

If you have any questions or concerns regarding construction, please contact:

Kelsey Pipelines Ltd.

Site Superintendent
Travis Stroeder
Cell: (306) 961-1590
Office: (306) 385-6285
Travis.s@kelseypipelines.com

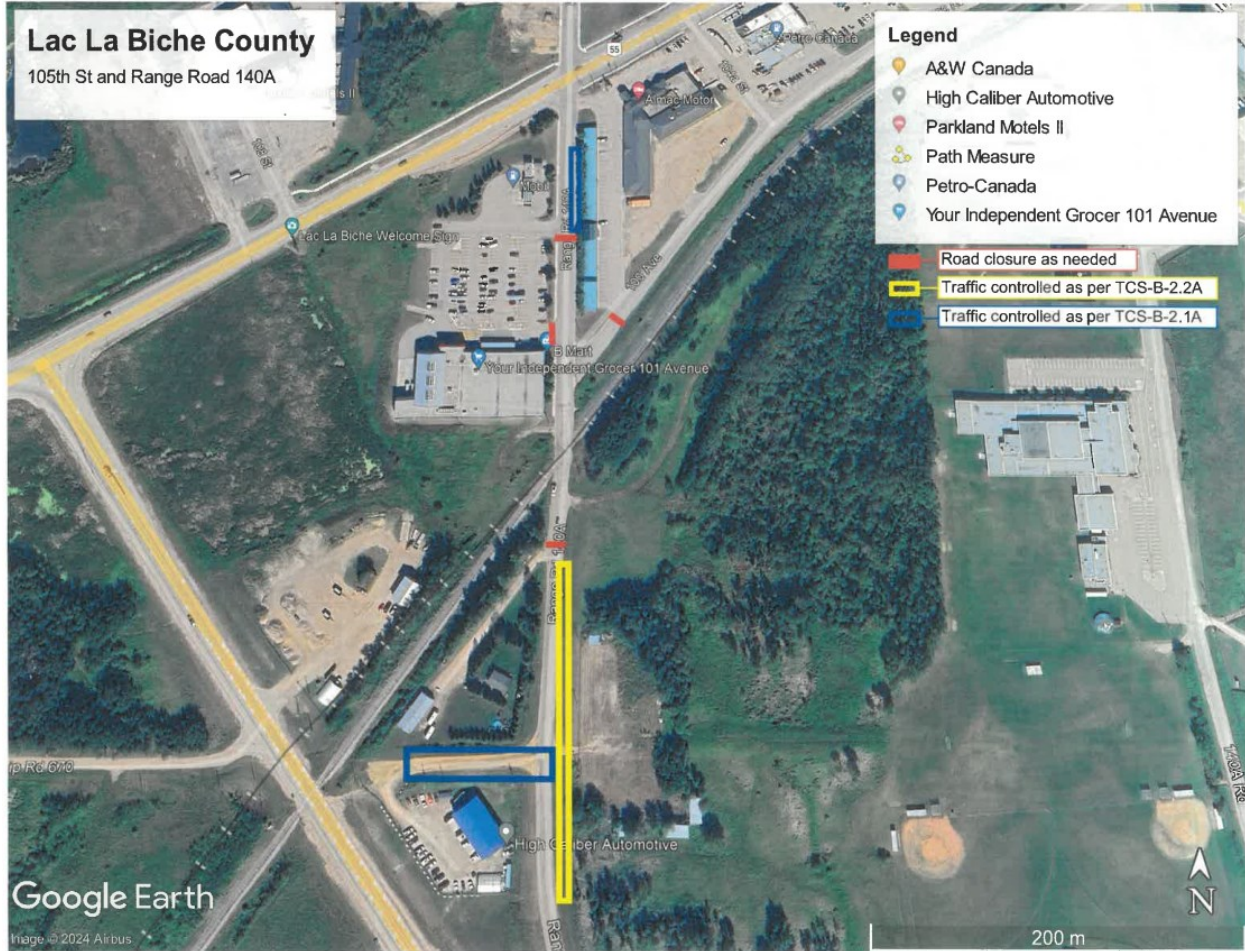
Canadian Consulting Engineers

Dr. Amin Augustin
Project Manager
Cell: (780) 298-5606
amin.augustin@cceab.ca

Lac La Biche County

Joel Cardinal
Construction Manager
Cell: (306) 471-4834
Joel.cardinal@lacobichcounty.com

Construction Area Map



Lac La Biche County website: <https://www.lacbabichcounty.com/p/current-construction-projects>